

# Unlocking Our Potential

California State University, Chico  
2017-18 University Foundation Annual Report



CELEBRATING  
**OUR BEST**  
FUNDRAISING  
**YEAR EVER**  
**\$16.9 MILLION**

## Introduction

California State University, Chico's 131 years of public service began in 1887, when John Bidwell donated eight acres of his prized cherry orchard to build Chico Normal School—establishing the first institution of higher education in the North State. The University Foundation was created in 1940. The nonprofit auxiliary engages those who care about Chico State; provides opportunities to enhance its teaching, research, and community programs; and guarantees ethical stewardship of gifts received.

The return on an investment in the University is far-reaching and never-ending. In addition to describing the Foundation's fundraising and investment performance, this annual report highlights the human impact of giving. It features stories of donors, students, faculty, staff, and community members and demonstrates the essential role your philanthropy plays in our future.

Your generosity helps us unlock student potential, open doors to creativity, and jumpstart innovation. Thank you.

---



## Charisse Armstrong

**Class Year:** Freshman

**Hometown:** Cedarville,  
Modoc County

**Major:**  
Computer Animation  
and Game Development

**Scholarship:**  
President's Scholar

**Career Aspirations:**  
Work in an animation studio  
for small game developer or major  
corporation such as Disney/Pixar

“

Being a recipient of this scholarship has helped me achieve my lifelong dream of attending college—it really would not have been possible otherwise. It's been amazing to put my heart and soul into what I'm learning instead of working multiple jobs. It has opened so many possibilities. I could not be more grateful for what it has done for me.

# Giving at a Glance



## Our best fundraising year on record!

**\$16,919,880**

WAS RAISED FROM  
JULY 1, 2017–JUNE 30, 2018  
INCLUDING CASH AND MULTIYEAR  
AND DEFERRED PLEDGES

**15,450**

donors made

**35,297**

gifts across the entire campus

Our donors contributed from

**46 states  
2 territories  
and 1 district**

**2,400**

SCHOLARSHIPS WERE AWARDED  
WITH A TOTAL VALUE OF

**\$2.5 M**

Unrestricted/Greatest Need

**\$3,896,877**

Largest Gift:

**\$5.7 million**

Smallest Gift:

**1 dollar**

Who's donating? ↓

**4%** are faculty or staff

**5%** are organizations

**13%** are students

**18%** are parents

**24%** are friends

**36%** are alumni

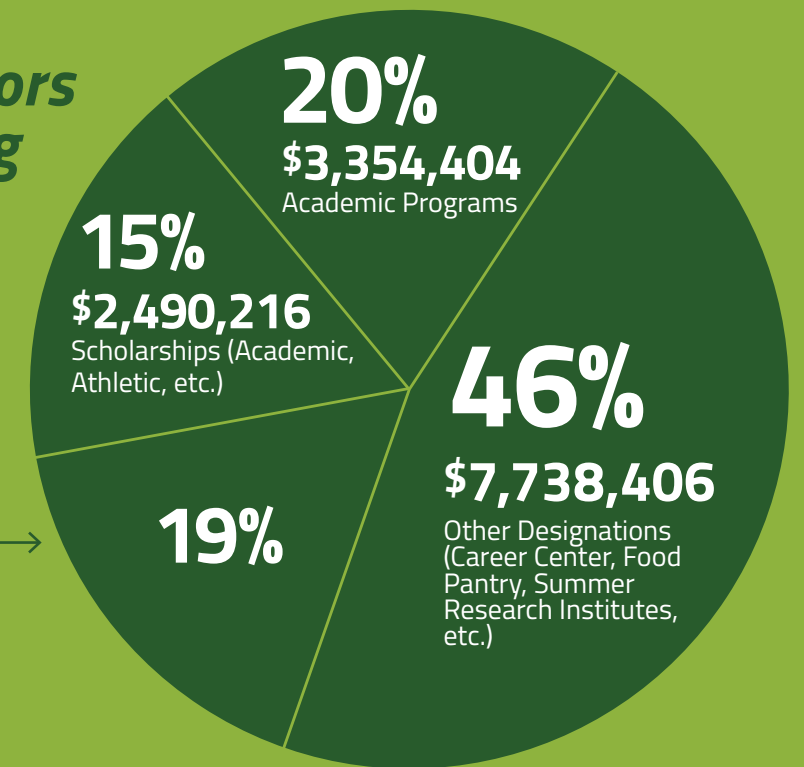
**100%** are appreciated →

# Giving at a Glance



## What our donors are supporting

- \$1,407,195 (8%)  
Public Services  
(Museums, NSPR, etc.)
- \$678,967 (4%)  
Buildings and Facilities
- \$525,000 (3%)  
Faculty Endowments
- \$384,012 (2%)  
Unrestricted
- \$341,749 (2%)  
Athletics



### Top designations by dollars

1. Regenerative Agriculture Initiative
2. College of Agriculture
3. North State Public Radio
4. College of Humanities and Fine Arts
5. Beavers Endowed Faculty Fellowship in Heavy Construction Management

### Top designations by numbers of donors

1. North State Public Radio
2. Chico State Fund (our greatest need)
3. Chico Cares (Chico State Basic Needs)
4. College of Business
5. Gateway Science Museum

**656** TOWER SOCIETY MEMBERS GAVE  
**\$4,827,108**

**212** TOWER SOCIETY GOLD MEMBERS GAVE  
**\$57,496**

**2,026** individual students made  
**2,289** gifts  
 for a total of  
**\$36,407.86**  
 raised by students!

# Unlocking Our Potential



## A message from the University President

---

Chico State celebrated many moments of excellence and achievements this year. Among them, the University was ranked No. 2 in the country, among 1,300 other universities, for graduating more students from economically disadvantaged backgrounds into good jobs and successful careers. Through the high-quality, hands-on education that we provide, we increase our students' social mobility, and in doing so, unlock their potential, support their passion to aim higher, and improve all our communities.

Chico State is a people's university. We proudly serve our students and our constituents as an intellectual hub for innovation, creativity, science, and education.

While the recent wildfires challenged our campus and neighboring communities, they also provide opportunities for us to be of service to our region and offer students hands-on learning. Chico State continues to lend its expertise to community initiatives and helps immerse students in real-life projects, practical research, and learning through volunteering. As our region rebuilds, we have the extraordinary opportunity as an intellectual hub to help reimagine our communities.

As our partner, you play an invaluable role. Amid the changing landscape of higher education, we can only achieve these things for the North State and beyond with your philanthropic leadership and support.

Through ***Transform Tomorrow | The Campaign for Chico State***, we aim to raise \$100 million to empower student success, build and renovate facilities, and invest in the people and programs that will drive our future. Thus far, we have raised more than \$70 million—and we will go public in spring 2019 following our best fundraising year on record.

Because of people like you who invest in the future and provide lasting endowments, we will be able to provide much-needed scholarships and invest in exceptional, committed faculty and state-of-the-art facilities outfitted with leading-edge technology.

Whatever learning opportunities you support with your gift—from science and engineering to business and nursing to the arts and education—you help us unlock student potential, open doors to creativity, and jumpstart innovation.

Together, we will inspire and support tomorrow's leaders and graduate Wildcats who are prepared to positively shape our future. Your gift is an investment that will transform the communities that we call home, as well as our state and our world.

***In 2019, together, Wildcats will transform tomorrow.***

**Gayle E. Hutchinson**

# Endowments Empower

In 2017–18, our donors created numerous endowments, enabling us to invest in promising students, recruit and retain world-class faculty, and build new programs. These endowments, which honor influential individuals and celebrate disciplines, provide lasting funds to support our students, faculty, and programs as they work to transform our region, state, and nation. Donors are partnering with Chico State to shape our future through their generosity.



## Impact in Action

The children of the late **Fred and June Lucchesi** of Oroville gifted \$50,000 to endow the **Fred and June Lucchesi Memorial Scholarship**. This will support the next generation of students in our accounting program and honors the Lucchesis' legacy in the accounting profession.

The family of **Maddie Allen**, a standout track and field team member, established the **Allen Family Women's Track and Field Endowment** with a \$25,000 gift to support the women's track program. This gift—our first established athletics program endowment—helps the program with operational costs that go above the general funding while honoring its impact on Allen's life. Between 2011–14, Allen notched victories in heptathlon and shot put as a member of four consecutive conference championship teams.

Retired staff member **Sandra Jensen** honored her late husband, Alan, who was a professor of sociology for 37 years, by establishing the **Alan F. Jensen Memorial Scholarship** to support those who wish to follow in his footsteps and study sociology or social work. Jensen taught nearly every course offered in the program and Master's in Public Administration program with passion and dedication and had a profound impact on students.

**Skip Reager**, who for nearly 40 years has been associated with coverage of Wildcat athletics, has endowed the **Skip and Cheryl Reager Athletic Scholarship**. Reager is a 20-year member of the Wildcat Century Club board of directors who raised thousands of dollars to support student-athletes. His new \$25,000 gift supports the future talent within our athletic programs.

“ This scholarship has allowed me to continue the pursuit of higher education, with less financial strain and worries. It has been extremely motivating and validating to see my hard work pay off.

—*Graduate student Daisy Rios*

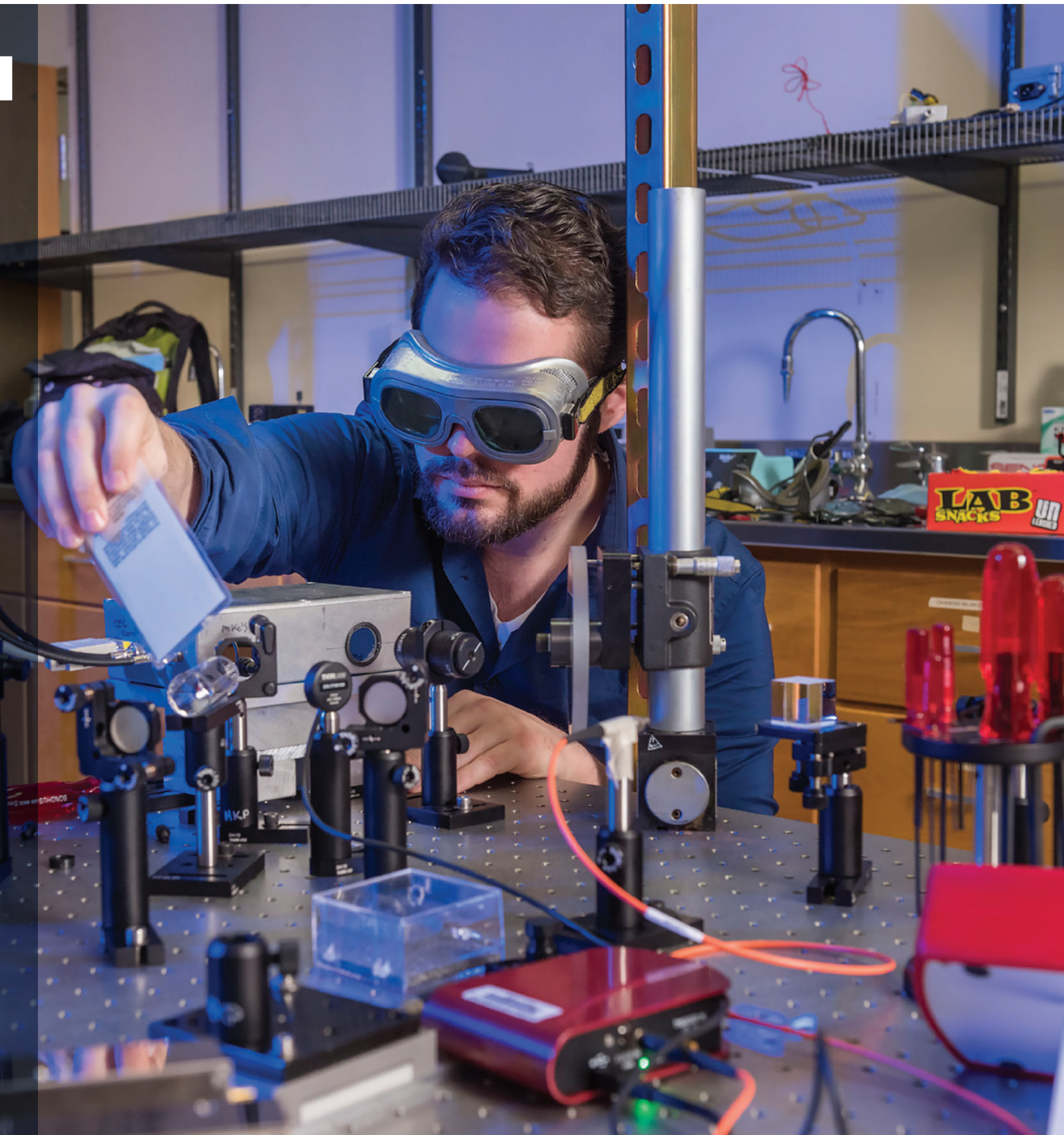
**Janeane Rhoads-Peterson and Kristen Avakian's** gift was named for their parents, the **Henry and Doris Peterson Memorial Scholarship and Endowment**. Its first recipient is first-generation student **Daisy Rios**, who dreams of earning her master's in social work and becoming a bilingual therapist. The scholarship allows her to focus on her studies and on an internship with Butte County Mental Health.

**Professor Joel Arthur**, who knows the vital importance of hands-on learning and access to state-of-the-art technology, has created the **Arthur Family Endowment**. It will support students' rich educational experiences in civil engineering without reliance on state funding.

In the same year that all 13 Wildcat athletics teams made it to the postseason—for the first time in program history—**Ken and Sheryl Lange** committed to giving \$150,000 to support our phenomenal teams as they represent Chico State in competitions across the country.

# Research and Renovation

Hands-on learning and research stand at the forefront of our Wildcats' educational experience. Updates to our facilities ensure students learn with the industry tools they will use in their professional field. Gifts toward these endeavors support students and faculty whose research drives innovation as they work across disciplines to tackle the world's most pressing problems.



## Impact in Action

Professors Emeriti David and Marilyn Winzenz established the **Winzenz Family Psychology Award**, which enables students to conduct research about behavior and the mind. Its first recipients included psychology major **Mia Koenig ('18)**, who studied whether relaxation rooms benefit college students in reducing anxiety and improving mindfulness. **Taylor Louthan ('18)** researched teacher happiness by comparing burnout, compassion fatigue, and self-compassion. **Jonathan Koussa ('18)** used his award to do research at the National Institutes of Health.

**California Foodshed Funders**, a fellowship of donors dedicated to regenerating California's agriculture and food systems, made gifts totaling more than \$1 million to support the **Regenerative Agriculture Initiative**, which researches farm practices that restore soil resiliency and draw down greenhouse gas levels. Led by agriculture professor **Cindy Daley**, the Initiative supports farmers and ranchers through on-farm applied research and farmer-to-farmer mentoring.

Thanks to a **\$20,000 gift by an anonymous donor**, students in the **Department of Geological and Environmental Sciences** are gaining field experience while researching the Yana Mountain area near Mount Lassen to help us understand the geological history of this important region.

**Drs. Sandra Machida and Geoffrey Fricker** established the Undergraduate and Graduate Research Grants in Psychology, which allowed senior **Cynthia Mancuso** to explore a possible correlation between impulsive choice, action, and aggressive behavior. Her work lays the groundwork for developing treatment plans to reduce aggression in dogs. **Kristin Vierra**, a master's student in psychological science, tapped Boys & Girls Club members for her research on the influence of feminist pedagogy on identity development in young girls.

“The trip was a highlight of my college career. I cannot express my thanks enough to the College of Ag and everyone involved in making this trip possible.”

—Trevor Fiock (*Agricultural Business*, '17)

For the second year, donors funded the **California Agriculture Seminar**, which took **30 students and six faculty and staff** across the state to explore the breadth, diversity, and reach of California agriculture. From a retail flower market in downtown San Francisco and the nation's largest lamb processing plant in Dixon to produce growers, packers, and shippers in the Salinas Valley, students learned firsthand about current issues and opportunities in agriculture.

With generous, recurring support, the **Chico Concrete Industry Management Patrons** continue to be major advocates for the **Concrete Industry Management program**—one of just four in the nation. Through one of the University's closest public-private partnerships, they ensure that students and faculty continue to have access to cutting-edge facilities and industry-level research.

Through a grant from the multibillion-dollar infrastructure company **MDU Resources Foundation**, we continue to modernize and expand lab space in the **College of Engineering, Computer Science, and Construction Management**.

# Campus and Community Giving

When a gift is made to any area on campus, it has the potential to change lives, uplift communities, and inspire environmental and social responsibility. Whether gifts directly support academic programs, drive partnerships that benefit students and the region, or name spaces in honor of remarkable individuals, they make a dramatic difference in our educational mission and throughout the North State.



## Impact in Action

Thanks to the generosity of **Chuck and Sylvia Seufferlein** and their \$250,000 gift to the College of Business, students are representing Chico State across the country in national sales competitions. Through the Seufferlein Sales Program, students across disciplines learn the value of sales and entrepreneurship as they showcase their talents and ingenuity.

.....

Thanks to an extraordinary gift from **Carol Windsor and Jim Wells**, the legacy of art professor Jack Windsor is now a permanent part of the fabric of our campus. **The Jack Windsor Ceramics Studio**, unveiled in April, honors Carol's father, who founded the ceramics program and taught on campus for 38 years. Carol and Jim also established the **Jack Windsor Ceramics Award Endowment**, whose first recipient, **Steven Osterlund (Art Studio, '18)**, saw his work honored this year by the National Council on Education for the Ceramic Arts from over 500 college student submissions.

.....

**Dr. Glen O. Toney (Philosophy, '66) and Mrs. Virginia Toney** gifted three incredible paintings and a serigraph by noted African American artist **William Tolliver**, which now hang in the second floor of the Arts and Humanities Building, entralling passers-by with vibrant colors, harmony, and diversity. The paintings will inspire generations of Chico State students to come.

.....

Former Redding mayor and Distinguished Alumna **Missy McArthur (English, '72)** has been a dedicated volunteer and civic activist in the North State her whole life. Wishing to honor her family's legacy at Chico State—as she, her mother, and her son are all alumni—she made a generous contribution to the College of Humanities and Fine Arts. In recognition of her philanthropy, we named the **Missy McArthur Lobby** outside the Zingg Recital Hall in the Arts and Humanities Building.

“

The donor's gift came at a critical time. As many know, the nonprofit world can be quite unpredictable and when a federal funder changes their priority areas or populations, the nonprofit work can end. This gift not only provides nutrition education to our most vulnerable populations, but also supports our student interns to ensure that the work has a significant impact long term.

—*Stephanie Bianco, faculty member and associate director of the CHC*

Thanks to the incredible generosity of an anonymous donor with a passion for supporting underserved communities, the **Center for Healthy Communities (CHC)** received a \$20,000 gift to fund its food education programs for local youth.

.....

**Melaine (Education, Credential, '61) and Thomas Taylor** are ardent supporters of future teachers earning their degrees and credentials at Chico State. When they learned some students struggle to afford the commute to their placements in schools in rural communities across the North State, they gave more than \$75,000 to establish the **Miles for Teaching Fund** to provide gas cards so our teacher candidates have no barriers to making a difference in the lives of the children they serve.

.....

**Professor Emeritus Wes Dempsey**, who taught in the Department of Biological Sciences for 38 years, made a generous gift of \$35,000 to the **Big Chico Creek Ecological Reserve** in order to support community outreach, fire mitigation, and educational programs. By asking for his gift to be used as a fundraising challenge, he was able to double the impact of his philanthropy in partnership with others' generosity.



# Focus on the Future

Planned and estate gifts allow donors to make contributions that meet personal financial planning goals while benefiting generations of deserving students in their pursuit of a Chico State education. Whether generosity is demonstrated through a donation of stocks and securities, real estate, bequests and life insurance, or donor-advised funds and endowments, planned giving will transform lives and communities we serve in the years to come.



## Impact in Action

**Carolyn Freese (Physical Education, Credential, '65)** made an unrestricted commitment of \$900,000 to support the College of Agriculture in memory of her husband, **Michael Freese (Agriculture, '66)**, who operated his family's farm in Solano County. Carolyn's gift honors the impact Chico State had on Michael Freese's life and his passion for helping youth interested in agriculture, while also supporting the next generation of agricultural leadership.

\*\*\*\*\*

**Darryl Seale (Business Administration, '76) and Karen Seale** invested in supporting students through a \$250,000 gift to the College of Business. The scholarship they established will ensure students demonstrating financial need have access to education and greater opportunity to focus on their studies.

\*\*\*\*\*

**Elizabeth "Betsy" Randolph (Spanish, '68; Credential, '69)** established a \$100,000 bequest designated for the Elizabeth Randolph Endowment, augmenting an earlier gift to make a larger impact. The endowment, established in 2012, supports both a Study Abroad award and the Betsy Randolph Spanish Language Scholarship. Betsy and her spouse, Rich, have been providing encouragement and support for Spanish language students and those who study abroad for many years, helping over 25 students in the past seven years. This gift will allow even more students to have such enriching experiences.

\*\*\*\*\*

**Joanne Grundman (Political Science, '67)**, who spent her career in public health, made a planned gift of \$300,000 to create the Joanne M. Grundman Scholarship for students majoring in health and community services whose studies will lead to careers practicing medicine. After her personal experience struggling to afford tuition, she wants to eliminate barriers and give future doctors, physician's assistants, or other medical professionals their chance to change the world.



These kinds of gifts are the best validation you can get. It's a testament to the energy and the enthusiasm that is out there for the important, groundbreaking work that we do. With state funds in continual decline, private funds are essential to make these kinds of innovative programs fly and to enrich our classrooms and teaching programs to make us the very best.

*—Cindy Daley, faculty member and RAI director.*

\*\*\*\*\*

**An anonymous \$5.7 million gift**—the largest in the University's history—will support the **Regenerative Agriculture Initiative (RAI)**, providing remarkable opportunities for agriculture and ecology research that will propel us to the forefront of the emerging area of resilient ecosystems.

# Building a Bold Tomorrow



## A message from the University Foundation CEO and 2018–19 Chair

As 2018 comes to a successful close, our growing culture of philanthropy at Chico State means that we have set numerous fundraising records. You—our donors—are simply incredible. You have allowed us to invest in our students and in the University like never before:

- **We raised a record \$16.9 million.**
- **Membership in the Tower Society grew to 878 and comprised 90 percent of all gifts.**
- **15,450 donors made 35,297 gifts across campus.**
- **We were able to award nearly 2,400 scholarships with a total value of \$2.58 million.**

We continue to be inspired by the magnitude of your kindness, your generosity, and your thoughtful commitment to the future. In the last year, we have been able to introduce impactful new courses, facilitate hands-on learning through internships, bring outside experts to campus, launch summer institutes, and implement state-of-the-art technology to drive needed research.

Our campaign, *Transform Tomorrow | The Campaign for Chico State*, has united our constituencies. Alumni, friends, parents, students, faculty, and staff have come together to help us boldly cross the \$70 million milestone.

We are inspired to see our benefactors rise in support of Chico State through both restricted giving and unrestricted gifts that allow us to allocate resources where the need is most critical. We have engaged alumni who contribute additional expertise to our campus and our fundraising. Together, we are poised to achieve our goal of \$100 million.

We are wise, thoughtful, and careful stewards of your investments. More than 17,500 students rely on our efforts. Another 100,000 community members look to Chico State as a hub of intellectual leadership, practical research, and field-specific advances. More than 140,000 alumni across the globe expand our network, extend our achievements, and broaden our horizons.

In 2019, we look forward to tapping this network to grow our Board, adding additional experts with vision and the ability to represent the thousands of donors who entrust us with their investments. As wider gaps in state funding and new challenges emerge, we will also seek additional endowments; these help us provide scholarships to a diverse range of students, attract and retain outstanding faculty, and spur innovative programs.

Your gifts can transform a single student's life, accelerate research results and program growth, extend the life and usability of a building and, ultimately, deepen our impact on the world.

Thank you for believing in our mission and joining us as a champion of our students and the University as we build a stronger future. Together, we will transform tomorrow in the North State and far beyond.

Sincerely,

A handwritten signature in black ink, appearing to read "Ahmad Boura".

**Ahmad Boura**  
CEO, University Foundation  
Vice President for University Advancement

A handwritten signature in black ink, appearing to read "Stuart Casillas '96".

**Stuart Casillas '96**  
Chair, University Foundation  
Board of Governors

## 2017–18 FINANCIAL IMPACT REPORT

### GIFTS & PLEDGES

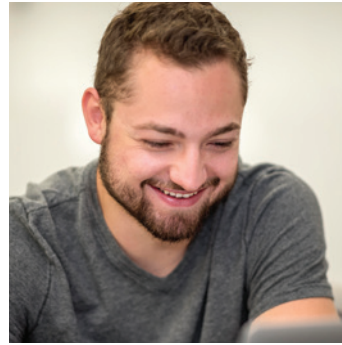
In **2017–18**, alumni, parents, friends, and other supporters donated and pledged more than **\$16.9 million** to academic, athletic, applied research, and public service programs across campus.

	FY17–18	FY16–17	FY15–16
Cash	\$6,738,551	\$7,306,279	\$5,162,950
In-Kind Gifts	\$989,434	\$433,368	\$789,061
Pledges	\$9,191,895	\$6,766,185	\$1,784,933
<b>TOTAL GIFTS AND PLEDGES</b>	<b>\$16,919,880</b>	<b>\$14,818,352</b>	<b>\$7,736,944</b>

### DONORS

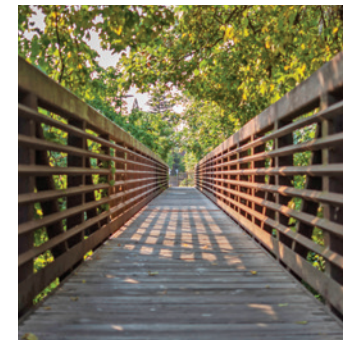
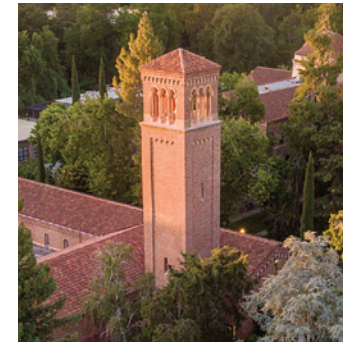
In the 2017–18 fiscal year, a record **14,678 donors and 772 foundations and corporations** provided vital funds to support our students, faculty, and programs. Alumni continue to make up the largest percentage of our donor base (36 percent) and their level of giving reached more than **\$4.6 million**. The next largest groups of donors are friends and parents (24 percent and 18 percent, respectively).

	FY17–18	FY16–17	FY15–16
Alumni	5,562	5,805	6,322
Parents	2,781	2,697	2,855
Faculty and Staff	618	348	193
Friends	3,708	3,730	3,754
Students	2,009	1,625	1,708
Foundations & Corporations	772	821	760
<b>TOTAL</b>	<b>15,450</b>	<b>15,026</b>	<b>15,592</b>



“Scholarships are what allow me to excel in my studies and are what aid me in becoming the overall best person I can be.”

—Branden Newberg-Cuellar,  
Senior, Double Major: Computer  
Science and Mathematics



### ASSETS & LIABILITIES

#### ASSETS

Cash & Cash Equivalents	\$1,773,453
Receivables & Other Current Assets	\$447,179
Investments	\$82,839,397
Contributions Receivable–Net	\$5,357,063
Buildings and Equipment–Net of Accumulated Depreciation	\$286,448
<b>TOTAL ASSETS</b>	<b>\$90,703,540</b>

#### LIABILITIES & NET ASSETS

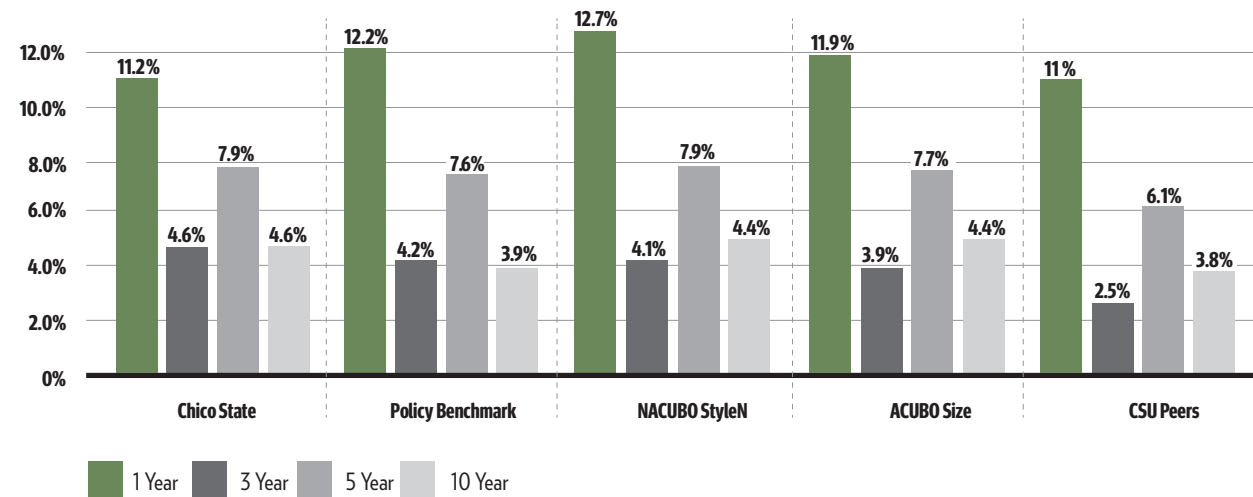
Accounts & Notes Payable	\$1,143,912
Liability Under Trust Agreements	\$4,560,952
<b>TOTAL LIABILITIES</b>	<b>\$5,704,864</b>
<b>NET ASSETS</b>	<b>\$84,998,676</b>

## POOLED ENDOWMENT INVESTMENT PERFORMANCE

### FY 2017 ENDOWMENT PERFORMANCE COMPARISON

The chart below compares Chico State's FY 2017 pooled endowment investment performance to the following endowment groupings: Sector Index Benchmark, National Association of Colleges and University Business Officers (NACUBO) Size, NACUBO Style, and CSU Peers.

While all groups experienced endowment losses in FY 2017, Chico State outperformed other campuses in the CSU. The University's three-year and five-year endowment performance also outperformed our CSU peers.



**Sector Index Benchmark:** This category was constructed by the Foundation's advisory firm, Arnerich Massena, to replicate Chico State's allocation targets, using the sector's closest index.

**NACUBO Size:** This category includes endowments in the NACUBO sample that have assets similar in size to Chico State—\$51 million to \$100 million.

**NACUBO Style:** This category includes endowments in the NACUBO sample that have an allocation mix that matches Chico State's allocation style—endowments of \$500 million to \$1 billion.

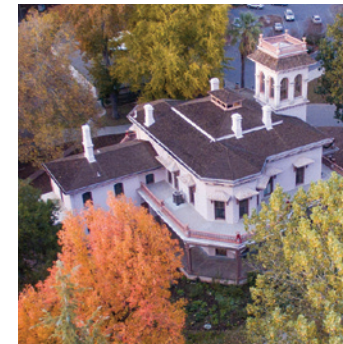
**CSU Peers:** This category includes universities that typically have 10 to 20 full-time fundraising professionals; 5,000–10,000 individual donors; and endowments of \$25 million to \$50 million.

## STATEMENT OF FINANCIAL POSITION

### FIVE-YEAR MARKET VALUE

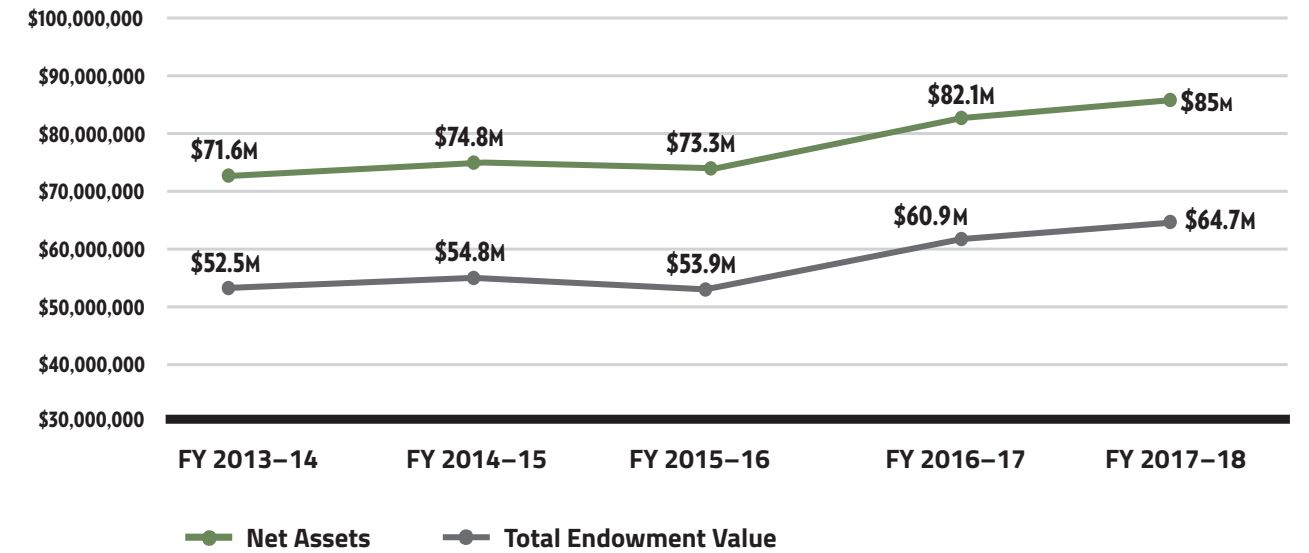
In five years, our total endowment value and net assets grew by 23 percent and 19 percent, respectively. The University Foundation's net assets totaled \$85 million as of June 30, 2018. The total endowment, valued at \$64.7 million, is managed by the Foundation's Board of Governors through its Finance and Investment Committee and under the advisement of the independent investment advisory firm Arnerich and Massena, Inc.

Year	Total Endowment	Net Assets
2017–18	\$64,728,583	\$84,998,676
2016–17	\$60,995,401	\$82,100,774
2015–16	\$53,938,221	\$73,300,961
2014–15	\$54,844,630	\$74,875,851
2013–14	\$52,562,821	\$71,618,490



## STATEMENT OF FINANCIAL POSITION

### FIVE-YEAR OVERVIEW TOTAL ENDOWMENT VALUE

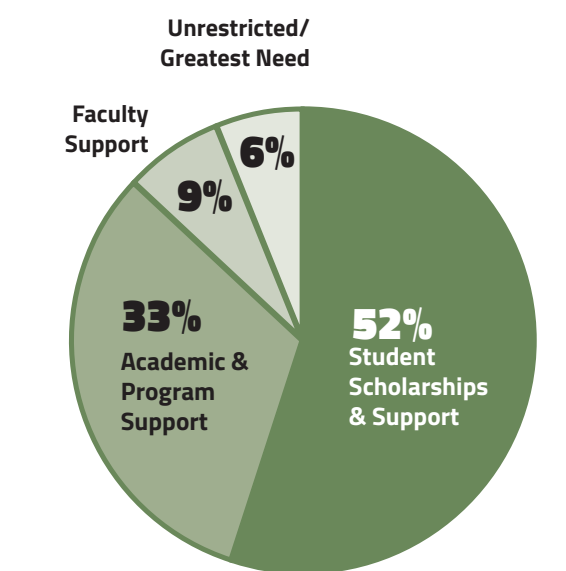


### ENDOWMENT BY PURPOSE

As of June 30, 2018, the endowment value was \$64,728,583. Donors have the opportunity to designate their gifts to support the people and programs they care about most. More than 50 percent of the endowment is earmarked for student scholarships, awards, and programs.

Student Scholarships & Support	\$33,721,693
Academic & Program Support	\$21,437,685
Faculty Support	\$5,672,328
Unrestricted/Greatest Need	\$3,896,877
<b>Total</b>	<b>\$64,728,583</b>

### ALLOCATION OF FUNDS (2017–18)



# Tower Society Honor Roll



In 2017–18, we celebrated our best fundraising year ever, as 15,450 alumni, students, parents, and friends raised more than \$16.9 million—90 percent of which was generated by Tower Society members.

---

**W**e are building a culture of philanthropy at Chico State, and through the magnitude of their generosity, our Tower Society members represent the heart of that effort. They share a bold vision to help us change lives, and in taking their investment in people and programs to the next level, their impact is far-reaching and never-ending.

We are delighted to introduce the 2017–18 members of the Tower Society and celebrate the essential role they play in supporting tomorrow's leaders. Thanks to our family of donors, in the last year we have been able to enhance workspaces, support staff and faculty in thinking beyond the classroom, introduce new courses, bring national resources to our campus, facilitate hands-on learning through summer research institutes and internships, and use innovation to drive research and implement state-of-the-art technology.

In 2017–18, we celebrated our best fundraising year ever, as together, 15,450 alumni, students, parents, and friends raised a record \$16,919,880—90 percent of which was generated by Tower Society members. And it is our Tower Society members who are the driving force behind *Transform Tomorrow | The Campaign for Chico State*, which has now surpassed the \$70 million mark on our way to raise \$100 million for three priorities: empowering student success through annual giving, renovating and building cutting-edge learning environments that facilitate innovation and collaboration, and investing in people by establishing endowments for scholarships, faculty support, and programs.

As we look to the future, our goal is to grow in a way never seen before on our campus. Our Tower Society members will continue to lead the way, investing in areas and projects they care about and inspiring others to do the same. We invite you to join this community of leaders and supporters as we build a bold future for Chico State. Together, we will transform tomorrow.



# 2017–18 HONOR ROLL

MEMBERS WHO CONTRIBUTED BETWEEN JULY 1, 2017 AND JUNE 30, 2018

## VISIONARY

**\$100,000 OR MORE**

Beavers Charitable Trust  
Chico CM Education Foundation  
Chico Concrete Industry Management Patrons  
Aaron Colton ('82) and Gina Colton ('82)  
Gaia Fund  
Harry C. & Deborah L. Elliott Family Foundation  
Dennis Murphy ('94)  
Jim Wells and Carol Windsor

## PHILANTHROPIST

**\$50,000–\$99,999**

Anonymous  
Aileen S. Andrew Foundation  
Chevron Corporation  
Clarence E. Heller Charitable Foundation  
Jay Gilbert ('69)  
Hayden Homes LLC  
Koch Foundation  
Cathy Pleasant  
Valene L. Smith  
Melaine Taylor ('61) and Thomas Taylor

## BENEFACTOR

**\$25,000–\$49,999**

Joel Arthur and Carol Arthur  
Wes Dempsey and Phyllis Dempsey  
Ron Duff ('71) and Lynn Duff  
Fidelity Charitable Gift Fund  
Geoff Fricker Jr. and Sandee Machida  
Granite Construction Company  
Sandra Jensen ('00)  
Bill Klein ('79) and Liz Klein ('78)  
Joanne Martin  
Thomas Milling and Marian Milling  
Chuck Nelsen ('89)  
Matt Ober ('07)  
George Parrott ('65)  
Skip Reager Jr. ('74) and Cheryl Reager  
Glen Thomas ('83) and Joyce Densmore-Thomas ('82)  
David Winzenz and Marilyn Winzenz  
Ricky Wood ('81)  
Dennis Young ('69) and Jan Young

## FOUNDER

**\$15,000–\$24,999**

Anonymous—4 donors  
Keith Bewley ('78) and Cheryl Bewley  
Janell Campbell ('78) and Richard Campbell  
Stuart Casillas ('96) and Kimi Casillas ('96)  
Construction Employers Association  
Charles Copeland and Sally Foltz

Scott Dalecio ('86) and Kathleen Dalecio  
Sam Fogleman ('85) and Laura Fogleman ('85)  
Foor Foundation  
Jeff Gasik ('84)  
David Hopper and Shari Maxson Hopper  
Johnson Family Foundation  
Tom Johnson and Kimie Johnson  
Billie Kanter ('68) and Kirk Monfort  
KPMG, LLP Foundation  
Louis and Harold Price Foundation, Inc.  
John McAmis and Renee McAmis  
Chris Nichols ('69)  
Richard Portis and Mary Portis  
Glen Toney ('66) and Virginia Toney  
Tri Counties Bank  
U.S. Bank Foundation  
Veritas Technologies LLC  
Tom Villa ('82) and Karyl Villa  
Virginia L. Jones Foundation  
Linda Zorn

## PIONEER

**\$7,500–\$14,999**

Anonymous—2 donors  
ADP, LLC  
Fred Avakian ('93) and Kristen Avakian ('93)  
Dick Baldy and Marian Baldy  
Doug Britt ('88)  
John Burghardt and Jamie Burghardt  
Butte Creek Foundation  
Martin Carovano and Barbara Carovano  
Charles Koch Foundation  
Cintas  
Clark Construction Group, LLC  
Bernard Davitto  
Red Emmerson and Maria Escosa-Emmerson  
Enterprise Holdings, Inc.  
Ergon Asphalt & Emulsions, Inc.  
Susan Erving  
Jane Fischer  
Graybar Electric Company  
Henry Schein, Inc.  
Dave Hodson ('90) and Christine LeCuyer-Hodson ('93)  
Richard Hughes ('69) and Marilyn Hughes  
InterWest Insurance Services, LLC  
Jeff Jones ('86)  
Bob Kittredge ('69) and Bobbie Kittredge  
Roger Lederer and Carol Burr  
Vern McHaney and Rose Crain  
MDU Resources Foundation  
Michael Messner ('74) and Pierrette Hondagneu-Sotelo  
Marcia Moore

Bill Niepoth ('49) and Marilyn Niepoth  
Scott Paine ('77) and Mary Kay Paine  
Westley Patton ('65) and Jane Patton  
Mike Prime and Robyn Prime  
Janeane Rhoades-Peterson ('96) and Scott Brown  
Richard Hughes Dairy  
Robby Paine Foundation  
Joan Rycraft ('68)  
Robert Salmon ('90) and Patricia Mertens-Salmon  
Darryl Schoen ('77) and Jaci Schoen  
Anne Sena ('97) and William Sena  
Chuck Seufferlein ('74) and Sylvia Seufferlein ('75)  
Shasta-Tehama-Trinity Joint Community College District  
Judy Sitton ('68)  
Howard Slater ('70) and Diane Slater ('78)  
Slater & Son, Inc.  
State Center Community College District  
Brad Watterson ('78) and Janelle Watterson ('79)  
Wells Fargo Foundation  
Bix Whitcomb ('69) and Wendy Yen  
Yellow Door

## EXPLORER

**\$3,500–\$7,499**

Anonymous—3 donors  
Keith Adams  
Aerotek, Inc.  
AGC Construction  
Caroline Aldrich-Langen  
Douglas Alexander and Kathleen Alexander  
Donald Alger and Barbara Alger  
Linda Allen ('81) and Gayle Hutchinson  
Jeanette Alosi ('79)  
American Society of Professional Estimators  
ASCC Education, Research & Development Foundation  
Abe Bailly  
Bank of Commerce Redding  
Robert Barnhart ('85)  
Angela Basi ('00)  
Daniel Beadle ('74) and Linda Beadle  
Cameron Beck ('88) and Kim Beck ('84)  
Gregg Berryman and Phyllis Berryman  
Bizness Apps, Inc.  
Lance Blanshei ('81) and Shelly Blanshei ('82)  
Grace Brewer ('78) and Mark Boydston  
Brighton Solar, Inc  
Stephen Brocchini ('98)  
Gary Brown ('69)  
Lois Bueler  
Thomas Burkett ('82) and Barbara Burkett ('77)  
Burroughs Family Farms, LLC  
Ward Burroughs and Rosie Burroughs  
Butte College

California Manufacturing Technology Consulting  
California Water Service Company  
Debra Cannon ('77)  
Cheuk-Kin Chau and Theresa Chau  
Chico Breakfast Lions Club  
Carlos Chinas and Beverly Chinas  
Chipotle Mexican Grill  
Kathryn Colburn-Magnusson ('73) and Peter Magnusson  
Colusa Industrial Properties, Inc.  
Crystal Equation  
Stephen Cummins and Sunday Cummins  
Tom DiGiovanni and Carol DiGiovanni  
John DiMichele ('76) and Bonnie DiMichele  
Jeanne Dryfoos ('41)  
E. M. T.  
Elaine English  
Donna Falk ('67)  
Phillip Figone ('84)  
Mark Fitzpatrick ('85) and Rhonda Fitzpatrick  
Five Star Bank  
Fixzyn, Inc.  
Diane Flaherty  
Food Industry Foundation  
Foothill Property Management  
Diane Fossum  
Nancy Fox ('64) and Jack Fox  
Sherry Fox  
Carolyn Freese ('65)  
Chris Friedland ('99) and Melissa Friedland  
Gallo Sales Company  
Andrew Gazdecki ('11) and Michelle Gazdecki ('12)  
Genentech  
George Lucas Family Foundation  
Google, Inc.  
Timothy Grewis ('90)  
Mary Growdon ('79)\*  
Lee Hamre ('76) and Deborah Blue  
Kent Harris ('73)  
Jon Hilbert and Bonnie Hilbert  
Nancy Hodges ('55)  
Marc Hollis ('87) and Donna Hollis ('87)  
Edwin Hulbert ('81) and Cathleen Hulbert ('79)  
Paul Huntzinger ('67) and Cele-Anne Huntzinger  
IBM Corporation  
Pamela Ikuta  
Christina Jensen Eckert  
Samuel Jewell and Isabel Jewell  
Sandy Kalinowski  
K-Coe Isom  
Edgar Kimball ('64) and Joy Kimball  
Larry Kirk and Maureen Kirk  
James Kirks Jr.  
Teresa Kludt ('77) and Walt Schafer

Kohl's Department Store  
Thomas Korver and Roxane Perruso  
Jeffrey Krisa ('89) and Marie Krisa ('88)  
Ken Lange ('65) and Sheryl Lange ('66)  
Debra Larson  
LaSalle Medical Associates  
Stephen Lee and LeeAnne Lee  
Bob Leppke and Julie Leppke  
Craig Lindsley ('92)  
John Loll and Jane Bielke-Loll  
Jim Lucchesi ('66)  
Lundberg Family Farms  
Victor Madero and Alicia Madero  
Allen Masuda ('71)  
John Mathena ('85)  
Thor Maydole ('67) and Connie Barr  
Missy McArthur ('72)  
David McCallen ('79) and  
Rose Esposito-McCallen ('80)  
Lefty McClellan ('72) and Jeannie Jacobs ('83)  
McConnell Foundation  
Ailsie McEnteggart  
Theresa McGowan ('58)  
June McMahon  
Edie Miller ('79)  
Sally Morton ('81)  
Jacqueline Murad ('76)  
National Philanthropic Trust  
Chuck Nelson ('72) and Paula Busch ('75)  
Marcie Nelson ('82) and Kenneth Gall  
Warren Nelson ('72) and Maritza Pick-Nelson  
Northstate Neurosurgical Associates  
Medical Group  
North Valley Ag Services  
Oroville Hospital  
Matthew O'Sullivan ('83) and Donna Garcia  
Pacific Gas & Electric Company  
Robert Pillsbury ('57) and Judith Pillsbury  
Richard Ponarul and Vimali Paul  
PowerSchool Group, LLC  
Raley's  
Betsy Randolph ('68) and Richard Randolph  
Claudia Rawlins ('77)  
Gary Reeve ('81) and Alicin Reeve  
Carolynn Reynolds  
Robert E. and Adele M. Boydston Foundation  
R & S Farms, Inc.  
Tim Sauer Sr. ('91)  
Randy Schiff ('90) and Laura Schiff ('04)  
Kathleen Schovajsa  
Sedwick Claims Management Services, Inc.  
Luke Seufferlein ('09)  
Sherwin-Williams Company

Sierra Pacific Foundation  
Stanley Black & Decker  
Staples  
Brandon Stegall ('95)  
Joan Stewart  
Stifel Nicolaus—Chico  
Bob Stofa and Becky Stofa  
Marti Sutton ('92) and John Sutton III  
Tailored Shared Services, LLC  
John Taylor ('72) and Suzanne Taylor  
Tea Innovations, Inc.  
TEK Systems  
The Albert and Rina Brocchini Family Foundation  
Thomas Tognoli ('88) and Lynn Tognoli  
Tom James Company  
Angela Trethewey ('88)  
Jennifer Wallace ('79) and Robert Fulton  
Walmart Stores and Sam's Club  
Gary Watters ('57) and Lorrene Watters ('56)  
Gary Weibel ('56) and Barbara Weibel ('62)  
Sally Wells  
David Whetstone ('66) and Carol Whetstone ('67)  
Chance Whittley

## LEADER

**\$1,500–\$3,499**

Anonymous—6 donors  
Aflac  
Almond Board of California  
Altum Wealth Advisors  
Beverly Alves ('75)  
Nicholas Ambrosia  
Diane Anderson  
Diane Apostolakos ('75)  
Arrhythmia Center of Northern California  
Ashlock Company  
Associated Students  
ASTM International  
Susan Avanzino  
Karen Avis ('81) and Jonathan Sylwester  
Holly Bailey ('96)  
Jenelle Ball ('82) and David Ball  
Thomas Bannon ('77)  
Ray Barker ('69) and Roma Barker  
Scott Barker and Anita Barker  
Alicia Barr ('96) and Andrew Barr  
Don Batie and Merle Batie  
Scott Bauhs ('08)  
Robert Bechard ('60) and Kathie Bechard ('81)  
Ted Bell and Judy Hennessey  
Arturo Benavidez Jr. ('02) and Tiffany  
Giammona-Benavidez ('02)  
Steven Benninga ('78)

Shanti Betts ('08) and Alexis Betts  
David Billings ('94)  
Jessica Bjork ('09)  
Sarah Blackstone  
Boice Family Fund  
Boman & Associates  
Kent Boman ('97) and Melissa Boman ('97)  
Margaret Bomberg  
Gary Borders ('71)  
David Bordin ('74) and Judy Bordin ('73)  
Ahmad Boura and Jen Boura  
Tyler Bramble ('94)  
James Braziel Sr. ('57) and Carol Braziel ('75)  
Margaret Brennan-Maxey and Robert Maxey  
Janet Brown ('77) and Michael Abruzzo  
Jeff Brown and Wendy Brown  
Judith Brown  
Francis Buchanan and Evelyn Buchanan  
Lee Bucknell ('59)  
Build Group, Inc.  
George Buonaccorsi ('66) and Vicki Buonaccorsi  
Thomas Burkland and Susan Burkland  
Jason Burns ('02)  
Butte Glenn Medical  
Robert Buzan  
Catherine Caldwell  
California Beef Cattle Improvement Association  
California Faculty Association Chico Chapter  
California League of Food Processors  
California Retired Teachers Association  
John Calvert ('04) and Melanie Calvert ('03)  
Capstone Accountancy, Inc.  
Betty Carlson ('57)  
Ted Carmody ('97) and Kimberly Carmody ('11)  
Harriette Carr ('66) and Jack Carr  
Bill Carson Jr. ('68)  
Anthony Carter  
Jeremy Carter  
Susan Avanzino  
Joseph Chiapella and Judy Chiapella  
Chico Eye Center  
Chico Hearing Aid Center  
Chico Natural Foods Inc.  
Chico Rotary Club Foundation  
Robert Christianson and Jennifer Christianson  
Robert Christopherson ('69) and Bobb  Christopherson  
C. H. Robinson Worldwide, Inc.  
Ronald Churchill ('75) and Leslie Churchill ('76)  
Miste Cliadakis and Steven Cliadakis  
Ryan Coker ('93) and Heidi Coker  
Sara Cooper and Sandra Beck  
Consolidated Electrical Distributors, Inc.  
Brian Corley ('95) and Zephra Corley

Mitch Cox ('81) and Laura Cox  
CPG Data, LLC  
Harold Crangle ('64)  
Kimberly Cupps ('84)  
Tom Cushman  
Dave Daley ('79)  
Lisa Dal Gallo ('86) and Josh Sullivan  
David Damazo and Becky Damazo  
Robert Damen ('79)  
Linda Dardarian ('83)  
Chris Davis ('83) and Timothy Davis  
Karl Dawson and Debra Barger  
Ailene Dean  
Christopher Devine ('96) and Renee Devine ('98)  
DHL Express  
Paul Dickinson and Barbara Dickinson  
Heather Dickson ('95) and Scott Dickson  
Diepenbrock Elkin Gleason LLP  
Gayle Dilley ('86) and John Dilley  
Dome Construction Corporation  
Robert Donoho ('84)  
Susan Donohue  
Catherine Dougherty  
DP Advertising, Inc.  
Lisa Driver ('82)  
David Eichner ('66) and Patricia Eichner ('66)  
Tag Engstrom and Kristine Mazzei  
Enloe Medical Center  
Gary Enos ('79) and Cindy Enos  
Scott Erwin ('86) and Laura Erwin  
Farm Credit West, FLCA  
Federated Insurance  
Phil Filbrandt and Joanne Reid  
David Filomeo ('78)  
William Flake and Sandra Flake  
Kenneth Fleming and Liz Fleming  
Erica Flores ('07)  
Foliofn Investments, Inc.  
Karen Ford ('99) and Richard Ford  
Forterra  
Kimberly Foss ('84)  
Gary Fowler ('77) and Elizabeth Sandbach ('79)  
Mark Francis ('82) and Jolene Francis  
Akihiro Fujikawa ('03)  
Scott Fulenwider ('04) and Kari Bianchini ('04)  
Nick Gainer ('80)  
Robin Gayle ('80)  
Morgan Geddie and Mary Geddie  
Joan Genthe  
Melvin George ('67) and Gail George  
James Gerber ('74)  
Joan Gerhardt ('68)  
Benjamin Gilbert and Vally Gilbert

Jim Gleason (‘81)  
 Nicole Gleason (‘95)  
 Steve Gonsalves (‘81) and Charlene Gonsalves (‘83)  
 Stephen Goodall (‘78) and Jane Goodall (‘78)  
 Kent Green and Judy Green  
 Jack Griswold (‘73)  
 Laura Grossman  
 Timothy Gross (‘91) and Marion Gross  
 Steve Gubber (‘84)  
 Doug Guerrero and Kelly Guerrero  
 Alex Gutierrez (‘79) and Kathleen Gutierrez (‘79)  
 John Hacker and Alexis Strauss  
 Allen Hackett (‘64)  
 Steve Hall (‘77) and Carol Stanley-Hall (‘73)  
 Chris Hammond (‘95)  
 Hamre Equipment Company, Inc.  
 George Hansen (‘73) and Sandra Hansen  
 Richard Hardin (‘70) and Katharine Hardin (‘71)  
 Neil Harris (‘74) and Lorena Harris  
 Harris & Plottel  
 Hart Farms  
 David Hassenzahl and Hilary Hassenzahl  
 Rand Hart  
 Neil Hennessy and Kathy Hennessy  
 Hensel Phelps Construction Co.  
 Daniel Herbert (‘77) and Kathy Herbert (‘78)  
 Julie Herman (‘11)  
 Timothy Herring (‘81) and Michelle Herring  
 Hilbers, Inc.  
 Kurt Hilbers (‘81)  
 Samuel Hillaire (‘02) and Sam Hillaire (‘99)  
 Kevin Hill (‘96)  
 Robert Hockett Jr. (‘71)  
 Pam Hollis and Greg Hollis  
 Thomas Hood (‘10)  
 Joann Hooker (‘88)  
 Jenifer Hornaday (‘97)  
 Jim Houpis  
 Ted Howard (‘68)  
 Graham Hutton and Suzanne Bresina-Hutton  
 Muhammad Hussain and Bashiran Hussain  
 Thomas Huston (‘81) and Carol Huston (‘82)  
 IM Chico 1 Opco, LLC (Residence Inn, Chico)  
 Inframark  
 Matthew Ives (‘79) and Connie Ives (‘81)  
 Richard Jackson and Giovanna Jackson  
 Ricardo Jacques and Michele Auzenne  
 Todd Jensen (‘87) and Adriana Jensen (‘87)  
 Terry Jewett (‘78) and Tony Jewett  
 Jim Johnson (‘64) and Mary Johnson  
 Matthew Johnson (‘84) and Cassie Bigelow-Johnson (‘83)  
 Melissa Jones (‘07)  
 Kassamali Kassam (‘75)  
 Jan Keller  
 Samuel Kisse (‘69) and Robert Zadra  
 Ron Knapp (‘80)  
 Knife River Construction  
 Linda Koch (‘71)  
 Mary Kowta (‘85) and Makoto Kowta  
 Marilyn Kruschke  
 Walter Kusumoto and Dawn Kusumoto  
 Daniel Lakowski  
 Tom Lando and Anastacia Snyder Lando  
 Milton Lang (‘93) and Janel Lang (‘96)

Andrew Lavagnino (‘83) and Anette Lavagnino  
 Fred Leek and Diana Leek  
 Ross Lemcke (‘76) and Karen Lemcke (‘76)  
 Lennox Industries, Inc.  
 Rush Lenroot and Hollie Lenroot  
 Leslie Lerner (‘84)  
 Nancy Leverette  
 Liberty Mutual Group, Inc.  
 Loeta Robles, DDS, Inc.  
 Elizabeth Lumbattis-Chalem  
 Richard Macias and Pat Macias  
 Marge Maddux (‘43)  
 MAINS'L  
 Makena Endeavors, LLC  
 David Mallas (‘98) and Ginger Mallas (‘99)  
 Marin Community Foundation  
 Rosanna Marino  
 Eric Marshall and Nancy Overton  
 Aaron Martella (‘99) and Shawna Martella  
 Sanford Ma (‘72) and Gloria Ma  
 Julie Mastrarrigo (‘84)  
 Ben Matthews (‘50) and Alma Matthews (‘52)  
 Deanna McCoy  
 James McFarland (‘54)  
 Michael McGie (‘57)\*  
 Nancy McGie (‘68)  
 Rich McGowan and Pam McGowan  
 Carrie McGranahan  
 Gary McMahon (‘84) and Bridget McMahon (‘97)  
 Mike McNeill Jr. (‘83) and Michele McNeill (‘84)  
 Mechanical Contracting Foundation, Inc  
 Steffen Mehl  
 Duane Menefee and Candace Menefee  
 Timothy Merrifield (‘89)  
 Paul Minasian and Susan Minasian  
 Mission Produce, Inc.  
 Asa Mittman  
 Laura Moravec (‘06) and Jim Moravec  
 Julia Moriarty (‘94)  
 Joan Murdock (‘74)  
 Rick Narad (‘79)  
 Nationwide Mutual Insurance Company  
 NC3 LLC  
 Tracy Neal (‘94) and Shelly Neal (‘95)  
 Craig Nelson (‘87) and Elizabeth Nelson (‘88)  
 Patrick Newell and James Smith Jr.  
 News America Marketing  
 John Nichols and Elizabeth Nichols  
 Lisa Nichols (‘01) and Chris Nichols  
 Kathy Nicol  
 Erick Nielsen (‘70) and Margaret Nielsen  
 Robyn North (‘83)  
 North State Symphony League  
 Northwestern Mutual  
 Nur Enterprises, Inc.  
 Dennis O’Connell (‘68) and Mikel O’Connell  
 Bob Odland and Charlotte Odland  
 Kevin Olsen (‘80) and Beatrice Olsen (‘81)  
 Mike O’Malley (‘74)  
 Don Osborne (‘75) and Nancy Osborne  
 Jeff Oxendine (‘82)  
 Jerry Pajouh and Diane Pajouh  
 Carlo Panaccione (‘84) and Julie

Panaccione  
 Ryan Patten  
 Paychex  
 Paycom Payroll, LLC  
 Mark Pellowski (‘86)  
 Patricia Penn  
 Bonnie Persons (‘88)  
 Craig Peterson  
 Philadelphia Insurance Companies  
 Placer Community Foundation  
 Zack Plottel (‘99) and Nicole Plottel  
 Jessica Porter (‘05)  
 James Postma (‘74) and Beverly Postma (‘74)  
 Ann Pyeatt (‘69)  
 Angela Quail  
 Gwen Quail  
 Darlene Quinn  
 Rabobank, N.A.  
 David Raven  
 Andy Wallace and Linda Davis-Reed  
 Marilyn Rees (‘81)  
 R. Gorrill Ranch Enterprises  
 Richard M. Schulze Family Foundation  
 R.J. Reynolds Tobacco Company  
 Steve Robinow and Rena Duhl  
 Jesse Robles and Loeta Oviedo-Robles  
 Phil Rogers (‘77)  
 Rolling Hills Casino  
 Rudolph and Sletten Inc.  
 Toni Ruggle (‘78) and Vickie Ruggle  
 Sacramento Region Community Foundation  
 Lee Salter (‘67) and Judy Salter  
 Erika Sander (‘63)  
 Linda Sbrocca (‘82)  
 SC Builders  
 Elmer Schaal (‘72) and Beverly Schaal  
 Nitsa Schiffman (‘82) and Irv Schiffman  
 Heather Schlaff  
 Mark Schwartz (‘84)  
 Dallase Scott (‘05)  
 Dave Scotto (‘89) and Debra Scotto  
 Maggie Sedar (‘78)  
 Dwight Seuser  
 Chris Sharp (‘11)  
 Emilyn Sheffield  
 Frederica Shockley  
 Sara Simmons (‘01) and Janet Rauch  
 Patrick Singleton (‘72) and JoAnne Villarreal  
 Alain Smith (‘75)  
 Lise Smith-Peters  
 Bob Sneed (‘69) and Jan Sneed  
 Sara Ansolabehere (‘10)  
 Jay Apalit (‘90) and Karen Apalit (‘07)  
 Dana Appley (‘09)  
 Ted Aquino (‘09)  
 Jaycob Arbogast (‘15) and Shannon Arbogast (‘12)  
 Brooks Bailey (‘09)  
 Patrick Ball (‘18)  
 Kasey Barnett (‘14)  
 Susan Barnett (‘07)  
 Logan Baxter (‘17)  
 Zachary Bay (‘09)

**GOLD**  
**GRADUATES OF THE LAST DECADE**  
**\$150—\$1,499**

Anonymous—6 donors  
 Monica Acosta (‘08)  
 Brenda Aguilera (‘08)  
 Jorge Alvarado (‘16)  
 Alain Smith (‘75)  
 Lise Smith-Peters  
 Bob Sneed (‘69) and Jan Sneed  
 Sara Ansolabehere (‘10)  
 Jay Apalit (‘90) and Karen Apalit (‘07)  
 Dana Appley (‘09)  
 Ted Aquino (‘09)  
 Jaycob Arbogast (‘15) and Shannon Arbogast (‘12)  
 Brooks Bailey (‘09)  
 Patrick Ball (‘18)  
 Kasey Barnett (‘14)  
 Susan Barnett (‘07)  
 Logan Baxter (‘17)  
 Zachary Bay (‘09)

Walter Stringfellow  
 Arthur Sutfin (‘67) and Joan Sutfin  
 Brian Sweeney (‘78) and Karen Sweeney (‘80)  
 Brooks Thorlaksson (‘78)  
 Gary Towne (‘91) and Roxanne Lara (‘98)  
 Tom Tracy (‘83)  
 Del Travis (‘75) and Patty Travis (‘77)  
 Gerald Uhland (‘85) and Barbara Uhland (‘85)  
 Universal Forest Products, Inc.  
 Charles Urbanowicz and Sadie Urbanowicz  
 Lionel Valley and Ellie Bradbury  
 Pat Van Dyke (‘75)  
 Daryl Vanella (‘76)  
 Eddie Vela and Celeste Jones  
 Vimali Paul, MD, Inc.  
 Carol Vivian (‘61)  
 Randall Vivian (‘97)  
 Cecily Von Berg  
 Ellen Walker  
 Betty Cheung (‘12)  
 Walsworth  
 Michael Warren  
 Penny Warren (‘82)  
 Greg Webb (‘70) and Joan Webb (‘70)  
 Donald Weidlein and Heidi Weidlein  
 Russell Weiss and Janna Weiss  
 Wells Fargo & Company  
 Claudia Wentworth (‘84)  
 Paul Wicker and Nancy Wicker  
 Alan Wilhelm (‘84)  
 Terry Williams (‘87) and Jerry Williams  
 Donald Willis (‘68)  
 Willows Veterinary Clinic  
 Patrick Winchell (‘95)  
 Mark Womack and Tracie Womack  
 Michael Wood (‘91)  
 Charles Worth and Denise Worth  
 Kevin Wright and Jennifer Wright  
 Mike Wyson (‘79) and Nanette Wyson  
 Young’s Market Company  
 Yuba Community College District

Arlyn Beneke (‘10) and Margaret Beneke (‘70)  
 James Benton (‘09)  
 Sarah Bergquist (‘11)  
 Ryan Beyers (‘12)  
 Rajpreet Bihala (‘16)  
 Whitney Bixler (‘08)  
 Sarah Bohannon (‘13)  
 Patrick Boivin (‘09) and Colleen Boivin (‘08)  
 Jena Boling (‘08)  
 Erik Brandtman (‘08)  
 Ian Brooks (‘08)  
 Lyda Brown (‘10)  
 Mary Butler (‘11)  
 David Calo (‘10)  
 Jose Campos (‘17)  
 Kelly Candelaria (‘07)  
 Tony Capretto (‘07)  
 Ryan Ceccarelli (‘16)  
 Betty Cheung (‘12)  
 Alfonso Cisneros (‘14)  
 Philip Clements (‘05) and Ashley Person (‘10)  
 Emma Colquhoun (‘18)  
 Kyle Conrad (‘11)  
 McKenzie Dalthorpe (‘14)  
 Jamie Daly (‘10)  
 Geneva Desin (‘17)  
 Molly Downtain (‘12)  
 Connor Doyle (‘18)  
 Kendall Duffield (‘18)  
 Blair Dugan (‘08)  
 Roy Dunlap (‘08) and Pamela Dunlap (‘05)  
 Michael Durando (‘09) and Courtney Durando (‘10)  
 Mitzy Edgecomb (‘11) and Shane Edgecomb (‘08)  
 Matthew Elston (‘08)  
 Sapur Engineer (‘13)  
 Antonio Facendini (‘11)  
 Michael Findlay (‘84) and Denise Findlay (‘86)  
 Keegan Fraschieri (‘08)  
 Leslie Freeland (‘08)  
 Andrew Gambino (‘07)  
 Charlee Ganzer (‘07)  
 Dawn Garcia (‘09) and Melvyn Richardson (‘08)  
 Melissa Garcia (‘12)  
 Ariana Gehrig (‘13)  
 Emily Gibson (‘18)  
 Reidun Gilbert (‘09)  
 Jessica Guaglianone (‘08)  
 Gian Gualco-Nelson (‘15)  
 Ellie Guinchard (‘18)  
 Carolyn Gurstein (‘18)  
 Brenda Gutierrez (‘17)  
 Veronica Guzman (‘11)  
 McCall Habermehl (‘16)  
 Timothy Haley (‘06) and Lindsey Haley (‘07)  
 Courtney Hamilton (‘14)  
 Kyle Harper (‘07)  
 Jeremy Hartelt (‘08)  
 Thomas Hatch (‘14)

Hunter Haworth (‘08)  
 Patrick Hensley (‘18)  
 Jose Hernandez (‘14)  
 Jerry Hight (‘89) and Susan Hight (‘08)  
 Erik Hormann (‘06) and Amy Hormann (‘08)  
 Sarah Houck (‘08)  
 Donna Humphrey (‘18)  
 Michael Huyck (‘91) and Connie Huyck (‘11)  
 Sena Ichikawa (‘07)  
 Maia Illa (‘09)  
 Jacqueline Ioiomo (‘08)  
 Cody Johns (‘11)  
 Scott Johnson (‘89) and Marie Paquette (‘08)  
 Amy Jones (‘10)  
 Aditya Joshi (‘18)  
 Meghan Jost (‘09)  
 Ross Judge (‘11)  
 Katherine Kanarek (‘11)  
 Morgan Keven (‘08) and Kimberly Keven (‘04)  
 Asad Khan (‘14)  
 Joseph Koch (‘12)  
 Andrew Langelier (‘11)  
 Darnell Lee (‘16) and Kaitlyn Baumgartner Lee (‘12)  
 Natalie Leifheit (‘17)  
 Miguel Leon (‘15)  
 Karin Lightfoot (‘09) and Robb Lightfoot (‘09)  
 Nathaniel Loker (‘14)  
 Callie Lutz (‘08)  
 Taylor Lydon (‘12)  
 Jeff Maas (‘04) and Samantha Maas (‘08)  
 Lindsay Macias (‘10)  
 Kris Magri (‘13)  
 Christopher Markey (‘10) and Jamie Markey (‘08)  
 Will Martin (‘12)  
 Heath Mason (‘11)  
 Ava McAllister (‘17)  
 Nicole McAllister (‘15)  
 Mandi McKay (‘08)  
 Dara Mckinley (‘08)  
 Ana Medic (‘15)  
 Manuel Mejia Jr. (‘11) and Andrea Mejia (‘09)  
 Daisy Mendez (‘18)  
 Shannon Mendonca (‘16)  
 Chris Michel (‘06) and Renee Michel (‘11)  
 Sara Mikesell (‘14)  
 Corey Miller (‘13)  
 Rebecca Monk (‘09)  
 Thomas Morgan (‘09)  
 Kara Morison (‘14)  
 Aric Morton (‘94) and Cinnamin Morton (‘10)  
 Mohit Nayyar (‘09)  
 Adam Nikssarian (‘14)  
 Mazi Noble (‘07) and Lauren Wilson (‘04)  
 Haley O’Loughlin (‘18)  
 Turner Olson (‘18)

Christina Pantera (‘10)  
 Drew Parsons (‘16)  
 Thomas Peacock (‘09)  
 Benjamin Pope (‘07)  
 Elizabeth Quivey (‘10)  
 Adam Raish (‘10)  
 Abbey Ranzau (‘18)  
 Alan Rellaford (‘82) and Daria Booth (‘09)  
 Zane Roesner (‘14)  
 Beau Rogers (‘10)  
 Kit Roggli (‘08)  
 Ariana Roman (‘17)  
 Thomas Rosenow (‘13) and Deborah Rosenow (‘89)  
 Aaron Ruch (‘07) and JT Ruch (‘08)  
 Tanner Ruhlen (‘15)  
 Lesley Rundberg (‘08)  
 Kiaya Sabolovic (‘17)  
 Henry Schleiger (‘13)  
 Eddie Serna (‘10) and Jennifer Serna (‘06)  
 Gabriel Shapiro (‘07)  
 Dylan Shelters (‘11)  
 Bria Shepherd (‘08) and Tim Shepherd (‘13)  
 Adrian Sherrod (‘13)  
 Nicholas Shirley (‘18)  
 Aman Singh (‘09)  
 Chi Siu (‘07)  
 Cassandra Smith (‘18)  
 Christopher Souder (‘08)  
 Ary Spilkin (‘18)  
 Stephanie Sprague (‘13)  
 Thomas Staiano (‘07)  
 Jennifer Sturm (‘07)  
 Olan Swan (‘08)  
 Gavin Swanson (‘10)  
 Ruth Testman (‘08)  
 William Thomas (‘14)  
 Rocky Torgrimson (‘10)  
 James Trauben (‘09)  
 Sudeep Unnikrishnan (‘09) and Tegan Unnikrishnan (‘11)  
 Marie Ussery (‘11)  
 Jeresly Vazquez (‘17)  
 Benjamin Wachman (‘10)  
 Annie Ward (‘15)  
 Michael Warencya (‘10)  
 William Warring (‘11)  
 Beth Wattenberg (‘08) and Steve Wattenberg (‘09)  
 Zeb Wheeler (‘10)  
 Chase Wick (‘14)  
 Denise Wills (‘07) and Robin Wills (‘08)  
 Kelsey Woodel (‘18)  
 Sean Woulfe (‘16)  
 Casey Wright (‘08)  
 Erin Wylder (‘16)  
 Johnny Yang (‘14)  
 Alma Zamacona (‘18)  
 Chris Zepeda (‘07)  
 Tianyu Zhou (‘16)

**GIFTS IN KIND**

Galil Motion Control  
 ModuSystems, Inc.  
 Motion Solutions  
 Omron Foundation  
 Virginia Pointer  
 University Corporation for Atmospheric Research

*Thank you for your support.*

◇ *Current students*

\* *Deceased*

If you feel your name has been omitted or listed incorrectly, please notify Scholarship and Donor Relations Coordinator Flynn Hoffman at 530-898-4796 or [donorrelations@csuchico.edu](mailto:donorrelations@csuchico.edu).



**LEAVING A LASTING LEGACY**

The University Foundation is pleased to recognize the following donors who have arranged to support CSU, Chico through their estate plans.

**Testamentary Commitments**

**July 1, 2017–June 30, 2018**  
**\$7,656,000**

**Anonymous**

**Tom Carter (‘70) and Donna Carter (‘69)**

**Carolyn Freese (‘65)**

**Joanne Grundman (‘67)**

**Gregory Meadows (‘87) and Nancy Meadows (‘89)**

**Missy McArthur (‘72)**

**Betsy Randolph (‘68) and Richard Randolph**

**Darryl Seale (‘76) and Karen Seale**

**Jim Wells and Carol Windsor**



## Board of Governors



**Debra Cannon, '77**  
 Founder, Lulus  
 Executive Committee, Finance and Investment Committee, Audit Committee  
 Term 2, Year 2



**Stuart Casillas, '96**  
 Partner, Kirkland & Ellis LLP  
 Chair of the Board, Executive Committee, Finance and Investment Committee, Development Committee  
 Term 2, Year 3



**Robin Gayle, '80**  
 Professor, Psychotherapist,  
 Dominican University of California  
 Finance and Investment Committee,  
 Development Committee  
 Term 1, Year 2



**Jay Gilbert, '69**  
 Vice President, A.L. Gilbert Co.  
 President, Oakdale Feed and Seed Co.  
 Director, Oak Valley Community Bank  
 Finance and Investment Committee,  
 Development Committee  
 Term 1, Year 2



**David Hodson, '90, '92**  
 Director of Engineering, Amazon  
 Executive Committee, Finance and Investment Committee Chair, Development Committee  
 Term 1, Year 3



**Rand Hutchison, '73, '77**  
 Founder and Former CEO, Travidia  
 Finance and Investment Committee,  
 Development Committee  
 Term 2, Year 3



**Tom Martin, '66**  
 Retired President and CEO, Durham Pump, Inc.  
 Development Committee,  
 Governance Committee  
 Term 2, Year 2



**Dr. Marcia Moore**  
 Cardiologist and Former Chair,  
 Department of Medicine, Enloe Medical Center;  
 Past President, American Heart Association,  
 Western States Affiliate  
 Development Committee Chair, Audit Committee  
 Term 2, Year 2



**Chuck Nelsen, '89**  
 Director, Merrill Lynch  
 Finance and Investment Committee,  
 Development Committee  
 Term 2, Year 2



**Michael Prime**  
 Vice President,  
 Option Care Home IV Services  
 Past Chair of the Board  
 Executive Committee, Finance and Investment Committee, Development Committee,  
 Governance Committee Chair



**Marilyn Rees, '81, '82, '00**  
 Lecturer, School of Education, CSU, Chico;  
 Administrator, Chico Unified School District  
 Finance and Investment Committee,  
 Development Committee  
 Term 1, Year 1



**Darryl Schoen, '77**  
 President, Manufacturers  
 Financing Services  
 Finance and Investment Committee,  
 Development Committee  
 Term 1, Year 2



**David Scott, '89**  
 SVP Organizational Performance,  
 Learning and Development, Sedgwick  
 Finance and Investment Committee,  
 Development Committee,  
 Governance Committee  
 Term 1, Year 1



**Thomas Villa, '82**  
 Consultant, Fresh Eyes, LLC  
 Lecturer, College of Business, CSU, Chico  
 Finance and Investment Committee  
 Term 2, Year 1



**Rick Wood**  
 President and Co-CEO, Cooks Collision  
 Finance and Investment Committee,  
 Development Committee  
 Term 1, Year 1

## Ex Officio Members and Representatives



**Gayle Hutchinson**  
 President,  
 CSU, Chico  
 Executive Committee, Finance and Investment Committee



**Ahmad Boura**  
 CEO, University Foundation and  
 Vice President for University Advancement  
 Executive Committee, Finance and Investment Committee, Development Committee,  
 Governance Committee



**Ann Sherman**  
 Vice President for Business and Finance  
 CFO, University Foundation  
 Executive Committee, Finance and Investment Committee, Governance Committee



**Milton Lang '93**  
 Vice President for Student Affairs



**Debra Larson**  
 Provost and Vice President  
 for Academic Affairs  
 Development Committee



Writer and Editor:  
**ASHLEY GEBB**

Senior Designer:  
**CHRISTIAN BURKE**

University Photographers:  
**JASON HALLEY,  
 JESSICA BARTLETT**

President, CSU, Chico:  
**GAYLE HUTCHINSON**

CEO, University Foundation  
 and Vice President for  
 University Advancement:  
**AHMAD BOURA**

Executive Director,  
 University Communications:  
**GARRETT CALDWELL**

Contributors:  
**KATE POST  
 JC ROSS**





California State University, Chico  
400 West First Street  
Chico, California 95929-0156

[www.csuchico.edu/giving](http://www.csuchico.edu/giving)